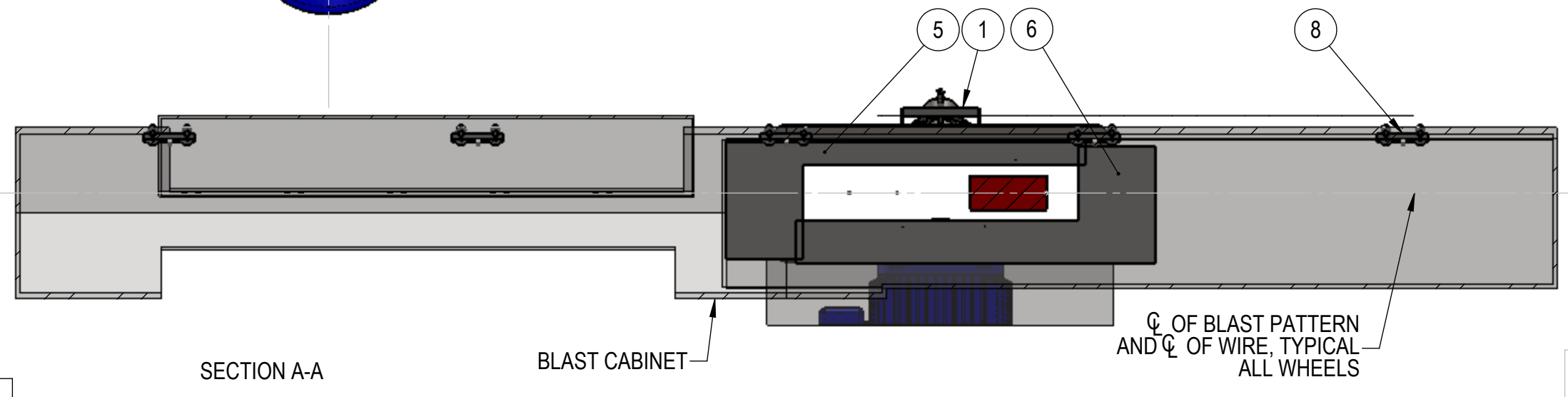
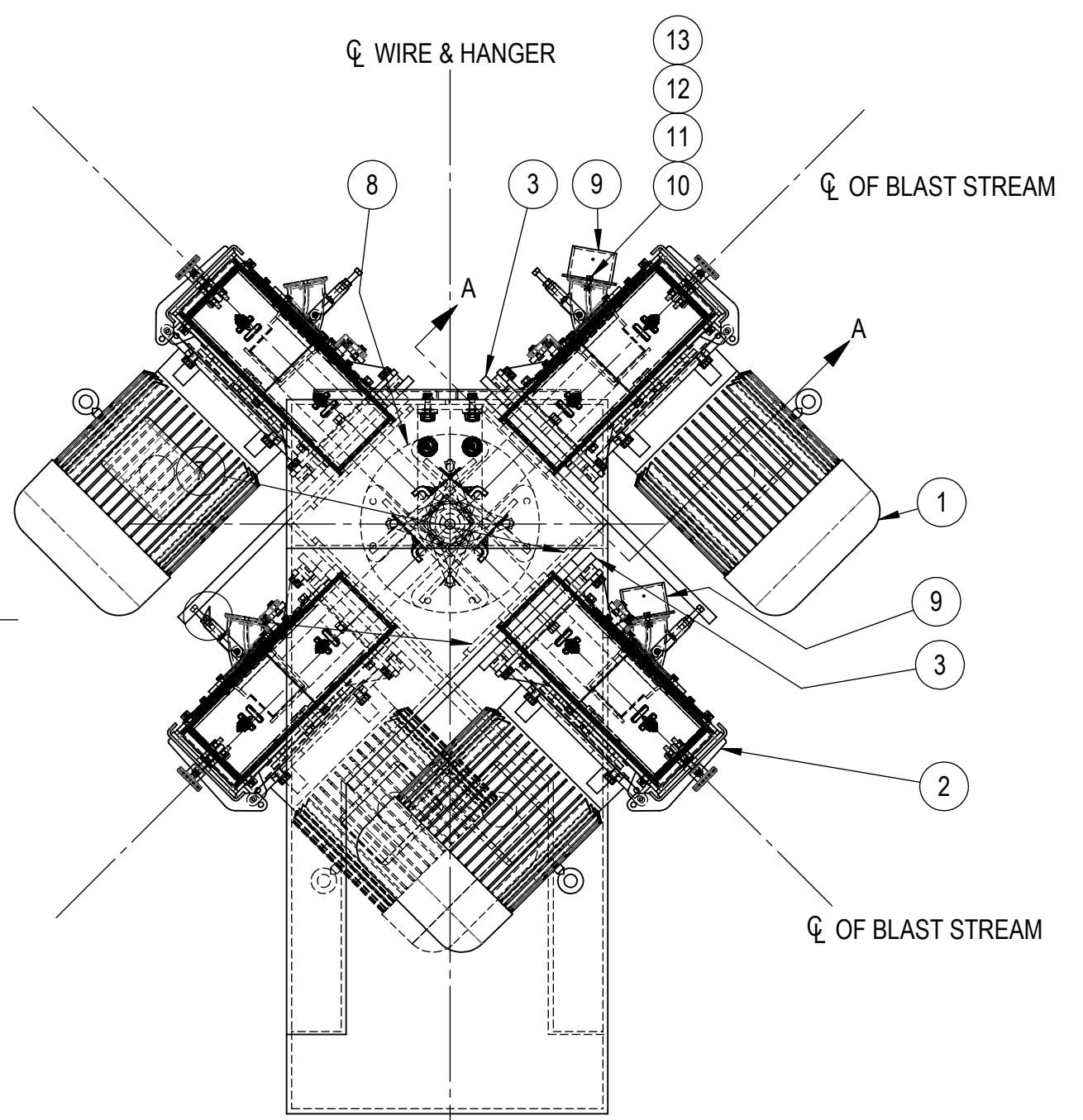
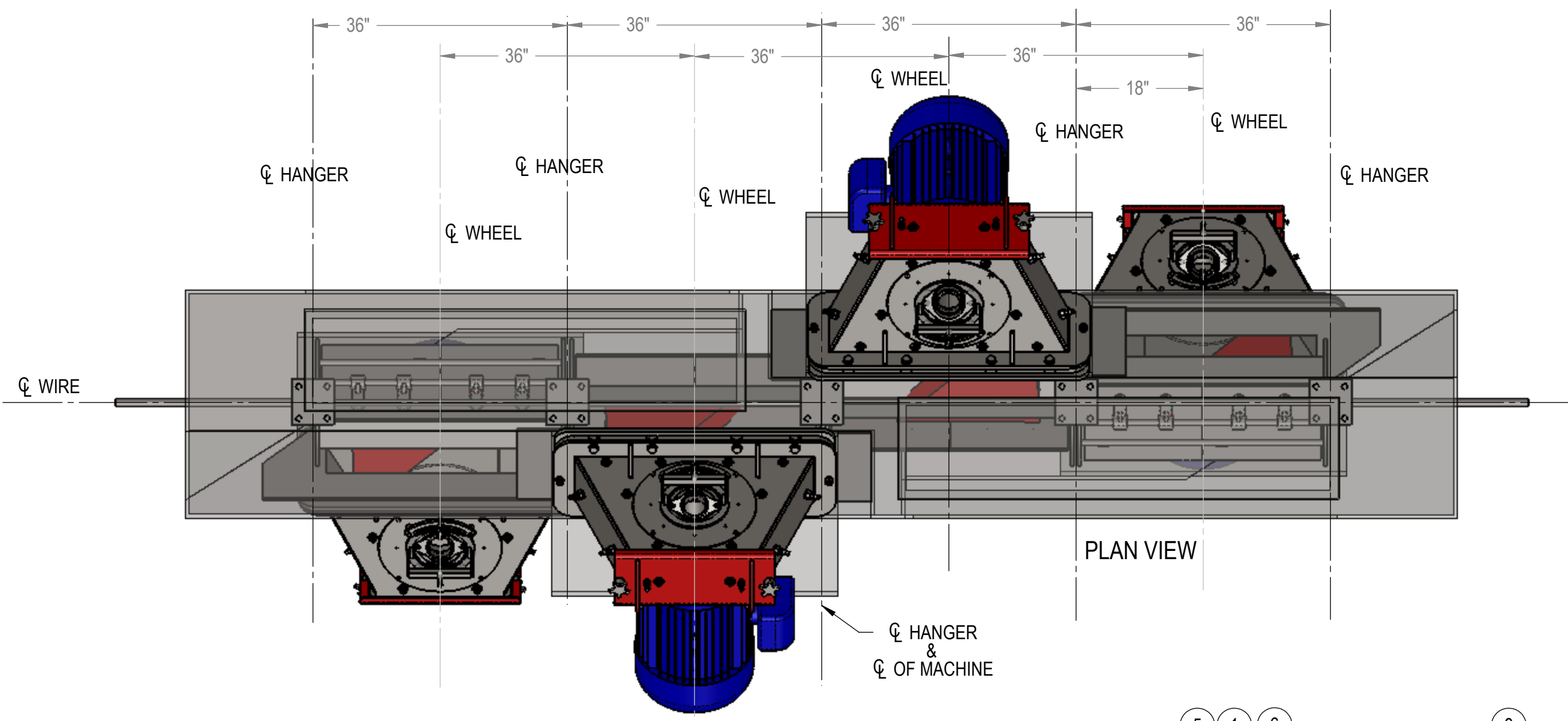


ITEM NO.	WEIGHT	QTY.	DESCRIPTION	PartNo	Number
1	-	2	Blast Wheel, 4G2 140, 75hp	-	-
2	-	2	Blast Wheel, 4G2 140, 75hp	-	-
3	61.31	4	Wheel Spacer Plate	M-1720	10-0954-B
4	42.98	2	Wheel Collar Segment A	M-1719	10-0953-B
5	29.83	2	Wheel Collar Segment B	M-1726	10-0957-B
6	40.16	2	Wheel Collar Segment C	M-1727	10-0958-B
7	37.35	2	Wheel Collar Segment D	M-1728	10-0959-B
8	1013.8	1	Confinement System Assembly	M-1716	10-0950-B
9	3.41	2	Feed Spout - 3" Hose Adaptor (45 deg Pangborn spout)	M-1766	10-0989-B
10	0.05	4	HHCS 3/8"-16NC x 1" LG.	MH-1239	-
11	0.00	4	Flat Washer 3/8"	MH-1002	-
12	0.01	4	Lockwasher 3/8"	MH-1011	-
13	0.01	4	Hex Nut 3/8"-16NC	MH-1029	-

NOTE:

1.  $\phi$  OF BLAST PATTERN MUST BE IN-LINE & CENTERED TO WIRE.
2. CONFINEMENT SYSTEM ASSEMBLY MUST BE CENTERED DIRECTLY IN-LINE WITH  $\phi$  OF WIRE.
3. WHEEL COLLARS ARE INTENTIONALLY OVERSIZE TO BE TRIMED TO SUIT FIELD ALIGNMENT.
4. WHEEL SPACER PLATE IS INTENDED TO SPACE WHEEL OUT SO SIDE LINERS BECOME FLUSH TO THE INSIDE OF THE BLAST CABINET.



REV.	DESCRIPTION	DATE
A	NOW IS THE COMPLETE MACHINE	7/16/2010

UNLESS OTHERWISE SPECIFIED:  
 DIMENSIONS ARE IN INCHES  
 TOLERANCES:  
 FRACTIONAL:  $\pm 1/16"$   
 ANGULAR:  $\pm 0.5^\circ$   
 TWO PLACE DECIMAL:  $\pm 0.015"$   
 THREE PLACE DECIMAL:  $\pm 0.005"$



DRAWN: G 1st		DATE: 06/14/10	
CHECKED:		DATE:	
PART NUMBER: M-1715		DO NOT SCALE DRAWING	
TITLE: Wire Blast Machine Ass'y		REV: A	
DWG. NO.: 10-0949-C		SCALE: 1:16 EST WT: N/A SHEET 1 OF 1	

PROPRIETARY AND CONFIDENTIAL  
 THE INFORMATION CONTAINED IN THIS DRAWING IS THE SOLE PROPERTY OF METCAST. ANY REPRODUCTION IN PART OR AS A WHOLE WITHOUT THE WRITTEN PERMISSION OF METCAST IS PROHIBITED.