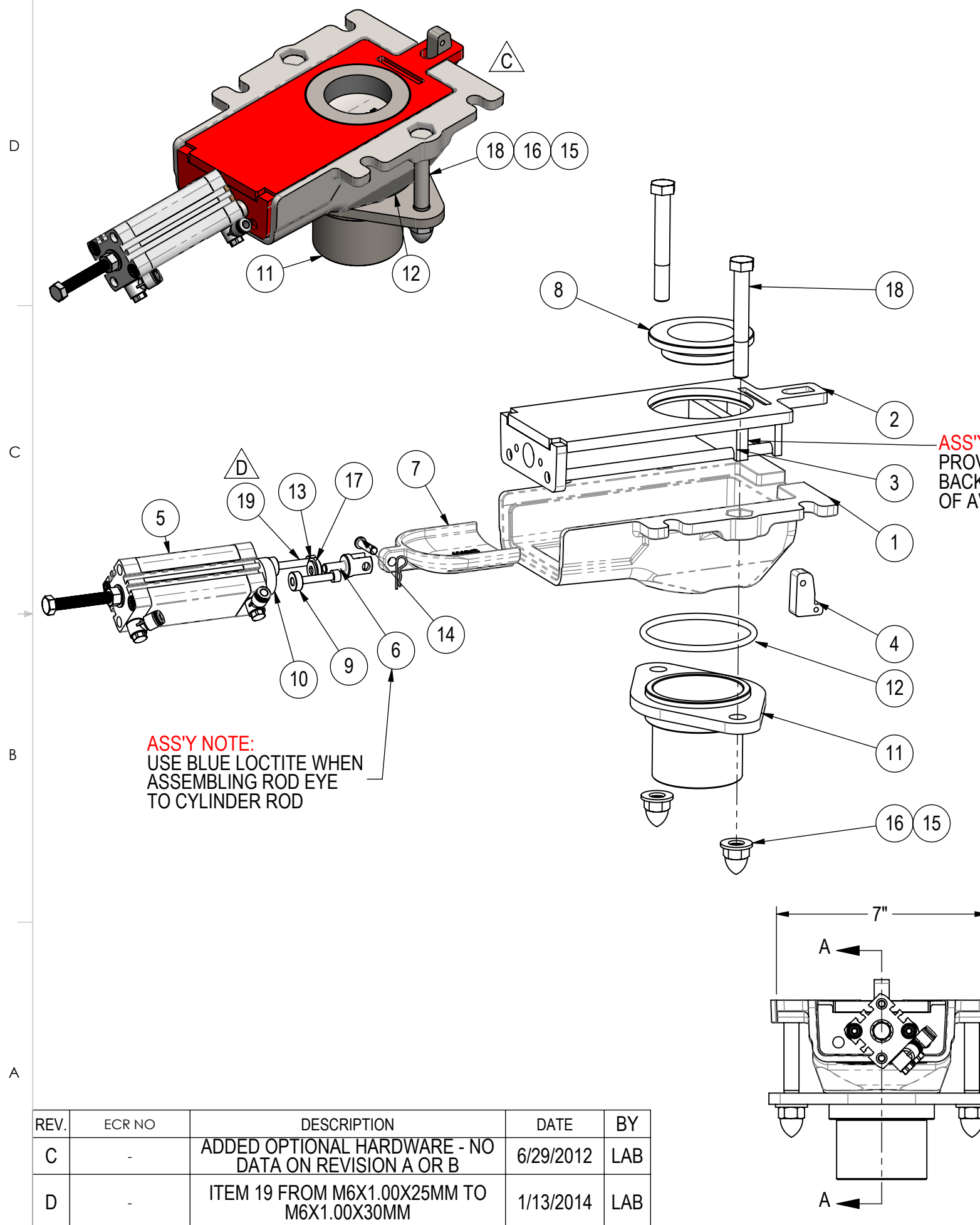


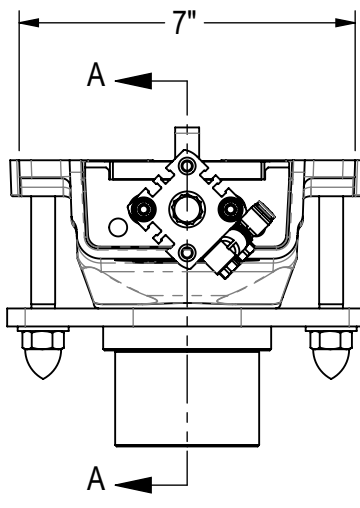
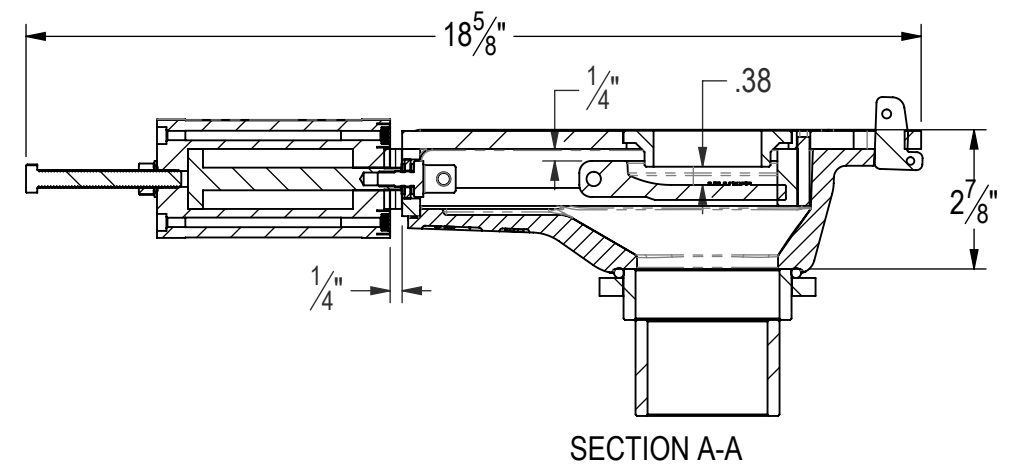
8 7 6 5 4 3 2 1



ASS'Y NOTE:
 PROVIDE ADHESIVE ON
 BACKSIDE
 OF AVM SCOPE RUBBER SEAL

ASS'Y NOTE:
 USE BLUE LOCTITE WHEN
 ASSEMBLING ROD EYE
 TO CYLINDER ROD

ITEM NO.	WEIGHT	QTY.	DESCRIPTION	PartNo	Number
1	9.76	1	VALVE, ABRASIVE, CAST BODY	M-3705	12-2981-B
2	4.48	1	VALVE, MOUNTING BRACKET	M-3706	12-2982-B
3	0.06	1	VALVE, ABRASIVE, RUBBER SEAL	M-3713	12-2988-A
4	0.14	1	Wedge	M-3710	12-2986-A
5	0.51	1	Cylinder for AVM	M-3732	12-3003-B
6	0.06	1	Rod Clevis	M-3979	12-3140-A
7	1.00	1	Scoop	M-3707	12-2983-B
8	0.65	1	Orifice	M-3708	12-2984-A
9	0.02	2	Cylinder Spacer	M-4468	12-3693-A
10	0.00	1	Felt Seal	M-4467	12-3692-A
11	3.24	1	Hose Adapter AVM 3inch	M-3715	12-2989-B
12	0.02	1	O-Ring .1875 x 3.5 ID x 3.88 OD	M-3722	-
13	0.00	1	Rubber Washer 13/16 OD, .35 ID, 1/8 THK	M-3711	-
14	0.02	1	Clevis Pin w/Hairpin Cotter Pin	MH-1717	-
15	0.06	2	NUT, HIGH CROWN ACORN, 1/2"-13NC, ZINC	MH-1512	-
16	0.02	2	WASHER, FLAT, 1/2", TYPE A, STANDARD (SAE)	MH-1388	-
17	0.00	2	WASHER, FLAT, 1/4", TYPE A, STANDARD (SAE)	MH-1384	-
18	0.24	2	HHCS, 1/2"-13NC X 3 3/4" LG	MH-1375	-
19	0.00	2	M6X1.00 x 30mm SHCS	MH-2204	-



- NOTE:**
1. BREAK ALL SHARP EDGES
 2. MATERIAL: See BOM

PART NUMBER
M-3712

PROPRIETARY AND CONFIDENTIAL
 THE INFORMATION CONTAINED IN THIS DRAWING IS THE SOLE PROPERTY OF METCAST. ANY REPRODUCTION IN PART OR AS A WHOLE WITHOUT THE WRITTEN PERMISSION OF METCAST IS PROHIBITED.

UNLESS OTHERWISE SPECIFIED:
 DIMENSIONS ARE IN INCHES
 TOLERANCES:
 FRACTIONAL ± 1/16"
 ANGULAR: ± 0.5°
 TWO PLACE DECIMAL ± 0.015"
 THREE PLACE DECIMAL ± 0.005"

METCAST
 Service Tech Resources

TITLE:
Abrasive Valve AVM

DRAWN LAB DATE 1/17/2012
 CHECKED DATE

FINISH ✓

DO NOT SCALE DRAWING

DWG. NO. **12-2987-B** REV **D**

SCALE: 1:4 EST WT: 21.6# SHEET 1 OF 1

REV.	ECR NO	DESCRIPTION	DATE	BY
C	-	ADDED OPTIONAL HARDWARE - NO DATA ON REVISION A OR B	6/29/2012	LAB
D	-	ITEM 19 FROM M6X1.00X25MM TO M6X1.00X30MM	1/13/2014	LAB