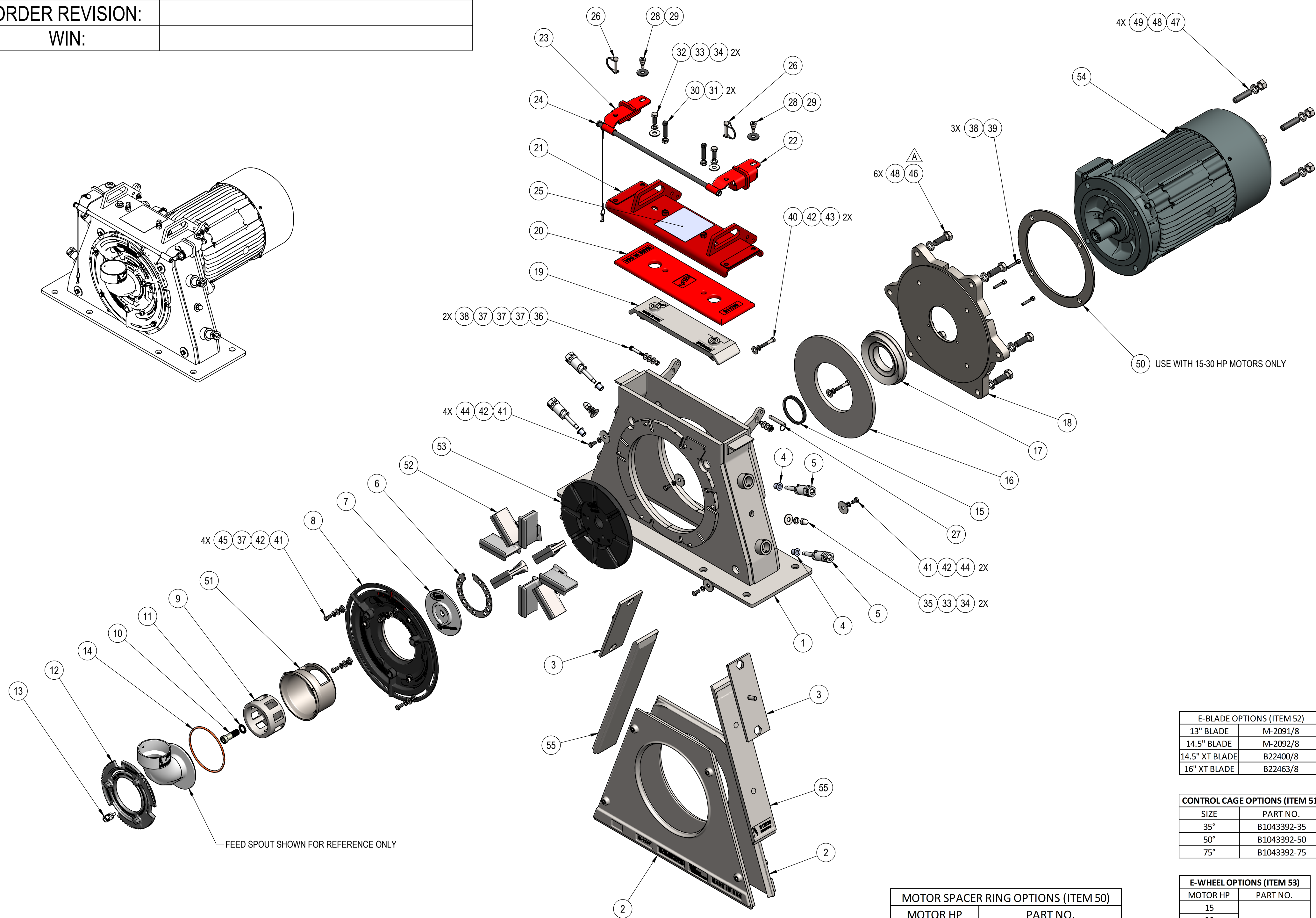
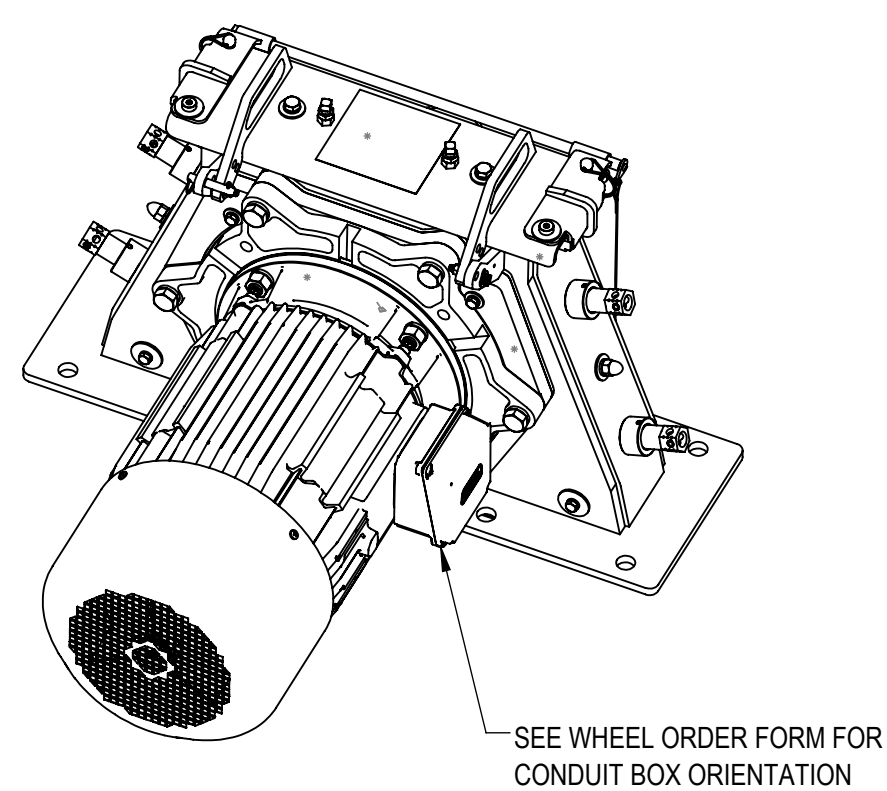


JOB: _____
 ORDER REVISION: _____
 WIN: _____



FEED SPOUT SHOWN FOR REFERENCE ONLY



MOTOR SPACER RING OPTIONS (ITEM 50)	
MOTOR HP	PART NO.
15-30 HP	M-2587 (DWG 11-1985-A)
40-75 HP	NO SPACER REQUIRED

MOTOR OPTIONS (ITEM 54)		
DESCRIPTION	PART NO.	WEIGHT
15 HP - 3600 RPM	M-3600-15-PE	280
	M-3600-15-XT	311
20 HP - 3600 RPM	M-3600-20-PE	295
	M-3600-20-XT	346
25 HP - 3600 RPM	M-3600-25-PE	415
	M-3600-25-XT	371
30 HP - 3600 RPM	M-3600-30-PE	450
	M-3600-30-XT	404
40 HP - 3600 RPM	M-3600-40-PE	486
	M-3600-40-XT	611
50 HP - 3600 RPM	M-3600-50-PE	753
	M-3600-50-XT	657
60 HP - 3600 RPM	M-3600-60-PE	1022
	M-3600-60-XT	858
75 HP - 3600 RPM	M-3600-75-PE	1045
	M-3600-75-XT	931

NOTE: SEE WIN #WHEEL ORDER FORM FOR ACTUAL OPTIONS SELECTED

E-BLADE OPTIONS (ITEM 52)	
SIZE	PART NO.
13" BLADE	M-2091/8
14.5" BLADE	M-2092/8
14.5" XT BLADE	B22400/8
16" XT BLADE	B22463/8

CONTROL CAGE OPTIONS (ITEM 51)	
SIZE	PART NO.
35"	B1043392-35
50"	B1043392-50
75"	B1043392-75

E-WHEEL OPTIONS (ITEM 53)	
MOTOR HP	PART NO.
15	M-2097-e-15-30
20	
25	
30	
40	M-2097-e-40-50
50	
60	
75	M-2097-e-60-75

END LINER OPTIONS (ITEM 55)	
OAL	P/N COMBINATION
23"	B12823 (1)

FEED SPOUT OPTIONS (REF)	
FEED SPOUT ANGLE	PART NO.
90°, 3.00" HOSE	B17886
90°, 3.50" HOSE	B22384
45°, 3.00" HOSE	B19184
45°, 3.50" HOSE	B19185
0°, 3.00" HOSE	B19186
0°, 3.50" HOSE	B19187

ITEM	WEIGHT	QTY.	DESCRIPTION	PART	DRAWING
1	238.47	1	M2 TWISTLOK IHM HOUSING WELDMENT	B1047867	B1047867
2	44.25	2	FRONT SIDE LINER CAST	M-1707	12-4999-B
3	4.45	2	EZM 2.5" AUXILIARY H LINER	M-2340	11-1724-B
4	0.01	4	M-LOK SEAL	M-6298	13-5394-A
5	0.77	4	M-LOK ASSY, 1.25 HEX, M3	B21985	B21985
6	0.39	1	INDEX RING, NUCKLESAVER	B17866	B17866
7	3.35	1	WEAR LATE, NUCKLESAVER, TWISTLOK	B17873	B17873
8	35.82	1	CONTROL CAGE ADAPTER ASSY, TWISTLOK EXTREME DUTY	B26199	B26199
9	5.09	1	IMPELLER, TWISTLOK, 2.5 WIDE	B1043393	B1043393
10	0.33	1	IMPELLER BOLT	B12809	B12809
11	0.02	1	WASHER, WEDGE LOCK, .750, ZINC PLATED	MH-2373	-
12	4.94	1	TWISTLOK RING	B17863	B17863
13	0.11	1	M-LOK ASSY, .75 HEX, .8125 BODY	B22467	B22467
14	0.03	1	FEED SPOUT SEAL RING, TWISTLOK	B17918	B17918
15	13.82	1	V-RING SEAL	M-2938	-
16	17.54	1	M2 REAR HUB LINER	B1048499	B1048499
17	8.75	1	MACHINED HUB SEAL	B12736	B12736
18	56.24	1	CAST MOTOR MOUNT ONE SIDED DRAIN SLOTS	M-7475	13-6541-B
19	16.01	1	LINER, TOP M2	B12824	B12824
20	2.87	1	SEAL, M2 LID	B11765	B11765
21	17.27	1	M2 LID WELDMENT	M-3953	12-3235-B
22	1.81	1	LID CLAMP, RH, 2.5 WHEEL	B15108	B15108
23	1.81	1	LID CLAMP, LH, 2.5 WHEEL	B15109	B15109
24	1.62	1	LID LOCK ASSY, 22.00 LG	B14500	B14500
25	0.27	1	E-WHEEL WARNING LABEL-LID LOCK	B14991	B14991
26	0.11	2	PIN WITH RETAINER SNAP, 3/8 OD	M-3087	-
27	0.11	1	QUICK RELEASE PIN	MH-1511	-
28	0.080	2	SCREW, SHC, SHOULDER, .50 DIA X .50 LG, .375-16UNC X 625 LG, ASTM A574	MH-2351	-
29	0.025	2	WASHER, BELLEVILLE, .500 X 1.500 X .112 THK, STEEL	M-180771	-
30	0.135	2	SCR, SET, SQ HEAD, CUP POINT, .500-13UNC X 2.00 LG, STEEL, BLACK OXIDE	MH-1520	-
31	0.025	2	NUT, HEX, JAM, .500-13UNC, STEEL, GR.5	MH-1509	-
32	0.11	2	SCR, HHC, .500-13UNC X 1.25 LG, GR.5, FULL THREAD	MH-1276	-
33	0.013	4	WASHER, LOCK, SPLIT, MEDIUM, .500, STEEL	MH-1013	-
34	0.038	4	WASHER, FLAT, .500 TYPE A, WIDE (USS) STEEL	MH-1004	-
35	.081	2	NUT, HEX, ACORN, HIGH CROWN, .500-13UNC, STEEL, GR.5	MH-1512	-
36	0.009	2	SHOULDER BOLT 3/8" DIA. X 1 1/2" LG	MH-1716	-
37	0.011	10	WASHER, FLAT, .312 TYPE A, WIDE (USS) STEEL	MH-1001	-
38	0.013	5	NUT, HEX, NYLON LOCK, .312-18UNC, STEEL, GR.8	MH-1560	-
39	0.031	3	SCR, SET, CUP POINT, .313-18UNC X 1.50 LG, STEEL, BLACK OXIDE	MH-2144	-
40	.079	2	SCR, HHC, .375-16UNC X 2.00 LG, GR.5	MH-1243	-
41	.041	10	SCR, HHC, .375-16UNC X .750 LG, GR.5	MH-1237	-
42	0.006	12	WASHER, LOCK, SPLIT, MEDIUM, .375, STEEL	MH-1011	-
43	0.018	2	WASHER, FLAT, .500 TYPE A, STANDARD (SAE) STEEL	MH-1388	-
44	.096	6	WASHER, FENDER, .500 X 1.75 OD, .125 THICK, STEEL, ZINC	MH-2436	-
45	0.04	4	T-NUT, .38-16NC THREAD	B17877	B17877
46	0.418	6	SCR, HHC, .750-10UNC X 2.25 LG, GR.5	MH-1330	-
47	0.353	4	SCR, SET, CUP POINT, .750-10UNC X 3.00 LG, STEEL ASME B18.3, ASTM F912, BLACK OXIDE	MH-2732	-
48	0.041	10	WASHER, LOCK, SPLIT, MEDIUM, .750, STEEL	MH-1015	-
49	0.117	4	NUT, HEX, FINISHED, .750-10UNC, STEEL GR.5	MH-1033	-
50	4.89	1	15-30 HP MOTOR SPACER RING	SEE TABLE	-
51	-	1	CONTROL CAGE	SEE TABLE	-
52	-	1	E BLADE, SET OF 8	SEE TABLE	-
53	-	1	E-WHEEL	SEE TABLE	-
54	-	1	MOTOR	SEE TABLE	-
55	-	2	M2 END LINER	SEE TABLE	-

UNLESS OTHERWISE NOTED DIMENSIONS ARE IN INCHES TOLERANCES: ANGULAR: ±1° TWO PLACE DECIMAL, ±0.000" THREE PLACE DECIMAL, ±0.030"

PROPRIETARY AND CONFIDENTIAL. THIS INFORMATION IS THE PROPERTY OF BLAST CLEANING TECHNOLOGIES. PARTS OR ASSEMBLIES WITHOUT THE WRITTEN PERMISSION ARE PROHIBITED.

MODELED BY: KH DATE: 01/13/2022
 DRAWN BY: KH DATE: 01/17/2022

DESCRIPTION: M2 TWISTLOK EXTREME DUTY IHM ASSY

SIZE: D DWG NO: B1045802 REV: A

DO NOT SCALE DRAWING SCALE: 1:8 EST WT: 1035.02# SHEET 1 OF 1