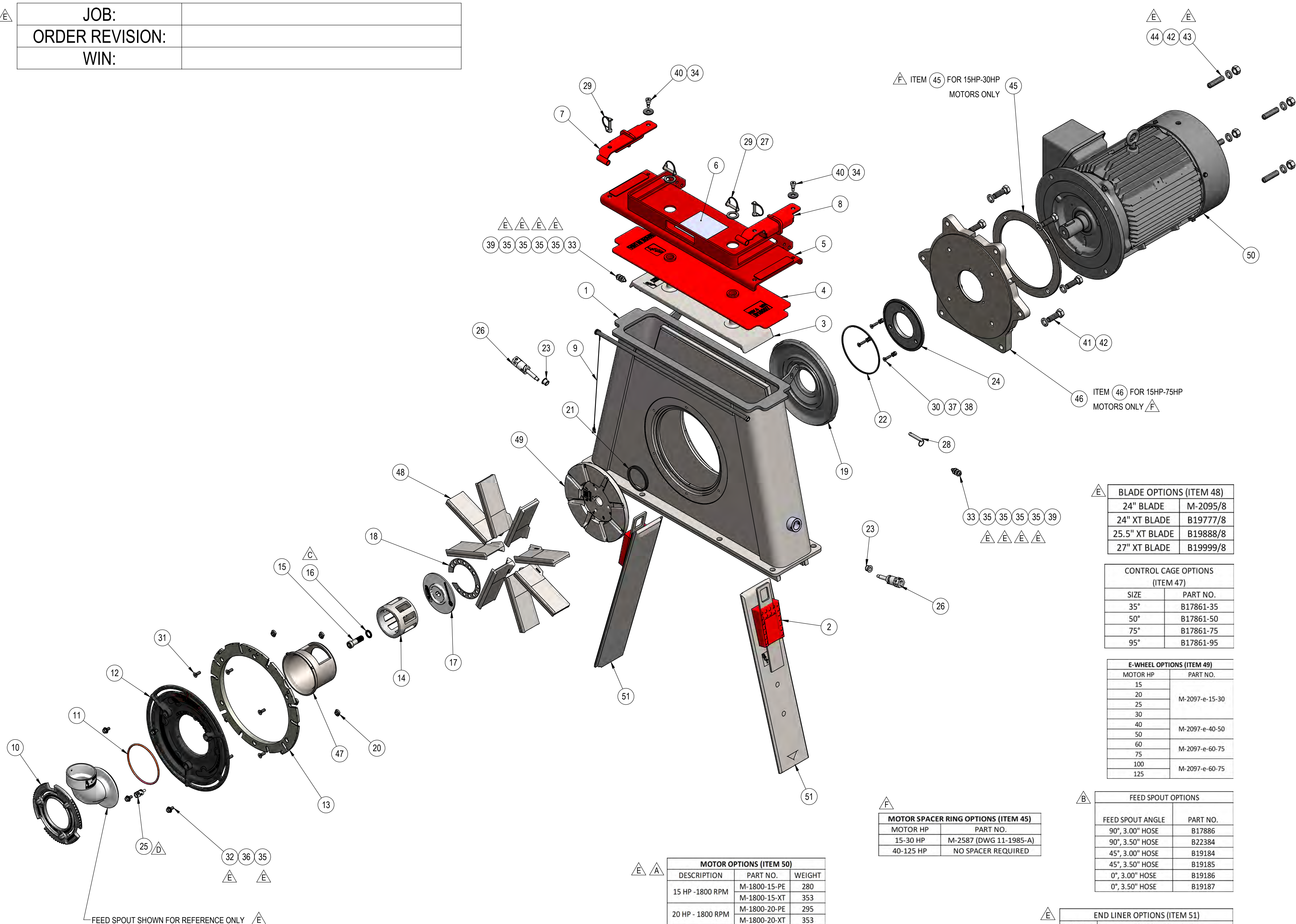


| | |
|-----------------|--|
| JOB: | |
| ORDER REVISION: | |
| WIN: | |



| ITEM | WEIGHT | QTY | DESCRIPTION | PART | DRAWING |
|------|---------|-----------|-------------------------------------------------------------------------------------|-----------|-----------|
| 1 | 547.167 | 1 | HOUSING WELDMENT, M5 | B18009 | B18009 |
| 2 | 3.48 | 2 | LINER WEDGE | M-6156 | 12-5252-B |
| 3 | 35.61 | 1 | TOP LINER, M5 | B18008 | B18008 |
| 4 | 4.38 | 1 | LID SEAL, M5 | B18007 | B18007 |
| 5 | 32.22 | 1 | LID WELDMENT, M5 | B18014 | B18014 |
| 6 | 0.27 | 1 | E-WHEEL WARNING LABEL-LID LOCK | B14991 | B14991 |
| 7 | 2.39 | 1 | LID CLAMP, LH, M5 | B18013 | B18013 |
| 8 | 2.39 | 1 | LID CLAMP, RH, M5 | B18012 | B18012 |
| 9 | 2.25 | 1 | LID LOCK ASSY, 31.00 LG | B18019 | B18019 |
| 10 | 4.94 | 1 | TWISTLOK RING | B17863 | B17863 |
| 11 | 0.03 | 1 | FEED SPOUT SEAL RING, TWISTLOK | B17918 | B17918 |
| 12 | 22.76 | 1 | CONTROL CAGE ADAPTER, TWISTLOK | B17862 | B17862 |
| 13 | 11.35 | 1 | T-NUT RING, TWISTLOK | B17875-N | B17875 |
| 14 | 5.68 | 1 | IMPELLER, TWISTLOK, 3.0 WIDE | B17860 | B17860 |
| 15 | 0.33 | 1 | IMPELLER BOLT | B12809 | B12809 |
| 16 | 0.02 | 1 | WASHER, WEDGE LOCK, .750, ZINC PLATED | MH-2373 | - |
| 17 | 3.35 | 1 | WEAR PLATE, NUCKLESAVER, TWISTLOK | B17873 | B17873 |
| 18 | 0.39 | 1 | INDEX RING, NUCKLESAVER | B17866 | B17866 |
| 19 | 19.45 | 1 | CAST HUBSEAL LINER M SERIES | M-5893 | 12-5001-B |
| 20 | 0.04 | 4 | T-NUT, .38-16NC THREAD | B17877 | B17877 |
| 21 | 13.82 | 1 | V-RING SEAL | M-2938 | - |
| 22 | 0.02 | 1 | O-RING, SQUARE PROFILE, 7.75 OD X 7.50 ID, BUNA-N 70 DURO, -.264 | MH-2352 | - |
| 23 | 0.01 | 2 | SEAL BUSHING, M-LOK PIN | B19029 | B19029 |
| 24 | 4.04 | 1 | CAST HUB SEAL SPACER | B18011 | B18011 |
| 25 | 0.11 | 1 | M-LOK ASSY, .75 HEX, .8125 BODY | B22467 | B22467 |
| 26 | 0.72 | 2 | M-LOK ASSY, 1.25 HEX, M5 | B18015 | B18015 |
| 27 | 0.05 | 2 | SHIM, 1.75 OD X 1.125 ID X .134 THK, STEEL | MH-2355 | - |
| 28 | 0.11 | 1 | QUICK RELEASE PIN | MH-1511 | - |
| 29 | 0.11 | 4 | PIN WITH RETAINER SNAP, 3/8 OD | M-3087 | - |
| 30 | 0.031 | 3 | SCR, FHC, .312-18UNC X 1.25 LG, STEEL | MH-2145 | - |
| 31 | 0.039 | 6 | SCR, FHC, .375-16UNC X 1.00 LG, STEEL | MH-1645 | - |
| 32 | .038 | 4 | SCR, HHC, .375-16UNC X .875 LG, GR.5 | MH-1238 | - |
| 33 | 0.056 | 2 | SCREW, SHC, SHOULDER, .375 DIA. X 1.00 LG, .313-18UNC X .50 LG, ASTM A574 | MH-2356 | - |
| 34 | 0.025 | 2 | WASHER, BELLEVILLE, .500 X 1.500 X .112 THK, STEEL | M-180771 | - |
| 35 | 0.011 | 12 | WASHER, FLAT, .312 TYPE A, WIDE (USS) STEEL | MH-1001 | - |
| 36 | 0.006 | 4 | WASHER, LOCK, SPLIT, MEDIUM, .375, STEEL | MH-1011 | - |
| 37 | 0.004 | 3 | WASHER, LOCK, SPLIT, MEDIUM, .312, STEEL | MH-1010 | - |
| 38 | 0.01 | 3 | NUT, HEX, FINISHED, .312-18UNC, STEEL GR.5 | MH-1028 | - |
| 39 | 0.013 | 2 | NUT, HEX, NYLON LOCK, .312-18UNC, STEEL, GR.8 | MH-1560 | - |
| 40 | 0.080 | 2 | SCREW, SHC, SHOULDER, .50 DIA. X .50 LG, .375-16UNC X .625 LG, ASTM A574 | MH-2351 | - |
| 41 | 0.418 | SEE TABLE | SCREW- SEE TABLE | SEE TABLE | - |
| 42 | 0.041 | SEE TABLE | WASHER, LOCK, SPLIT, MEDIUM, .750, STEEL | MH-1015 | - |
| 43 | 0.353 | SEE TABLE | SCR, SET, CUP POINT, .750-10UNC X 3.00 LG, STEEL ASME B18.3, ASTM F912, BLACK OXIDE | MH-2732 | - |
| 44 | 0.117 | SEE TABLE | NUT, HEX, FINISHED, .750-10UNC, STEEL GR.5 | MH-1033 | - |
| 45 | 4.89 | 1 | 15-30 HP MOTOR SPACER RING | SEE TABLE | - |
| 46 | - | 1 | MOTOR MOUNT | SEE TABLE | - |
| 47 | - | 1 | CONTROL CAGE | SEE TABLE | - |
| 48 | - | 1 | E BLADE, SET OF 8 | SEE TABLE | - |
| 49 | - | 1 | E-WHEEL | SEE TABLE | - |
| 50 | - | 1 | MOTOR | SEE TABLE | - |
| 51 | - | 2 | END LINER, M5 | SEE TABLE | - |

BLADE OPTIONS (ITEM 48)

| | |
|----------------|----------|
| 24" BLADE | M-2095/8 |
| 24" XT BLADE | B19777/8 |
| 25.5" XT BLADE | B19888/8 |
| 27" XT BLADE | B19999/8 |

CONTROL CAGE OPTIONS (ITEM 47)

| SIZE | PART NO. |
|------|-----------|
| 35° | B17861-35 |
| 50° | B17861-50 |
| 75° | B17861-75 |
| 95° | B17861-95 |

E-WHEEL OPTIONS (ITEM 49)

| MOTOR HP | PART NO. |
|----------|----------------|
| 15 | M-2097-e-15-30 |
| 20 | |
| 25 | |
| 30 | M-2097-e-40-50 |
| 40 | |
| 50 | |
| 60 | M-2097-e-60-75 |
| 75 | |
| 100 | |
| 125 | M-2097-e-60-75 |

FEED SPOUT OPTIONS

| FEED SPOUT ANGLE | PART NO. |
|------------------|----------|
| 90°, 3.00" HOSE | B17886 |
| 90°, 3.50" HOSE | B22384 |
| 45°, 3.00" HOSE | B19184 |
| 45°, 3.50" HOSE | B19185 |
| 0°, 3.00" HOSE | B19186 |
| 0°, 3.50" HOSE | B19187 |

MOTOR SPACER RING OPTIONS (ITEM 45)

| MOTOR HP | PART NO. |
|-----------|------------------------|
| 15-30 HP | M-2587 (DWG 11-1985-A) |
| 40-125 HP | NO SPACER REQUIRED |

END LINER OPTIONS (ITEM 51)

| OAL | PN COMBINATION |
|-----|-------------------------|
| 29" | B33529 (1) |
| 34" | B12815 (1) & B12740 (1) |
| 34" | B33534 (1) |

MOTOR OPTIONS (ITEM 50)

| DESCRIPTION | PART NO. | WEIGHT |
|-------------------|---------------|--------|
| 15 HP - 1800 RPM | M-1800-15-PE | 280 |
| | M-1800-15-XT | 353 |
| | M-1800-20-PE | 295 |
| 20 HP - 1800 RPM | M-1800-20-XT | 353 |
| | M-1800-25-PE | 415 |
| | M-1800-25-XT | 399 |
| 25HP - 1800 RPM | M-1800-30-PE | 450 |
| | M-1800-30-XT | 399 |
| 30 HP - 1800 RPM | M-1800-40-PE | 486 |
| | M-1800-40-XT | 772 |
| 40 HP - 1800 RPM | M-1800-50-PE | 753 |
| | M-1800-50-XT | 772 |
| 50 HP - 1800 RPM | M-1800-60-PE | 1022 |
| | M-1800-60-XT | 1094 |
| 60 HP - 1800 RPM | M-1800-75-PE | 1045 |
| | M-1800-75-XT | 1094 |
| 75 HP - 1800 RPM | M-1800-100-PE | 1330 |
| | M-1800-100-XT | 1248 |
| 100 HP - 1800 RPM | M-1800-125-PE | 1572 |

MOTOR MOUNT & HARDWARE (ITEMS 41, 42, 43, 44, & 46)

| MOTOR HP | 15-75HP | | 100-125 HP | |
|-----------------------|---------|------------------------|------------|----------|
| DESCRIPTION (ITEM #) | QTY | PART NO. | QTY | PART NO. |
| MOTOR MOUNT (ITEM 46) | 1 | M-7475 (DWG 13-6541-B) | 1 | B18010 |
| SCREW (ITEM 41) | 6 | MH-1330 | 8 | MH-2429 |
| WASHER (ITEM 42) | 4 | MH-1015 | 8 | MH-1015 |
| SET SCREW (ITEM 43) | 4 | MH-2732 | 8 | MH-2732 |
| HEX NUT (ITEM 44) | 4 | MH-1033 | 8 | MH-1033 |

NOTE: SEE SALES ORDER FOR SPECIFIC MOTOR CONFIGURATION.

UNLESS OTHERWISE NOTED DIMENSIONS ARE IN INCHES TOLERANCES: ANGULAR ± 1° TWO PLACE DECIMAL ± 0.000° THREE PLACE DECIMAL ± 0.000° FINISH: ✓ (UNLESS OTHERWISE NOTED)

MODELED BY: AC DATE: 01/11/2016
 DRAWN BY: AC DATE: 01/15/2016
 SIMILAR TO: [Symbol]

DESCRIPTION: M5 ASSY, TWISTLOK, STANDARD DUTY

SIZE: D DWG NO: B18005 REV: F

DO NOT SCALE DRAWING SCALE: 1:8 EST WT: 1580.88# SHEET 1 OF 2