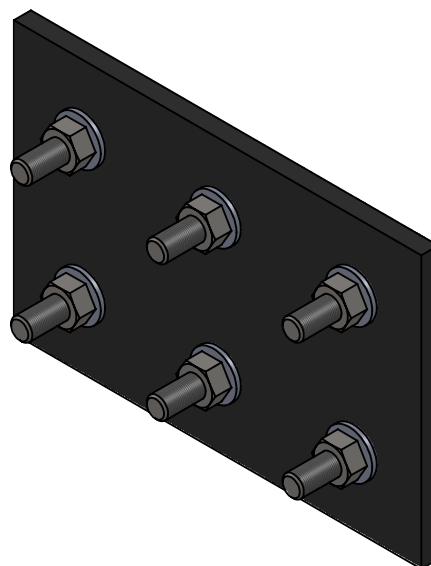
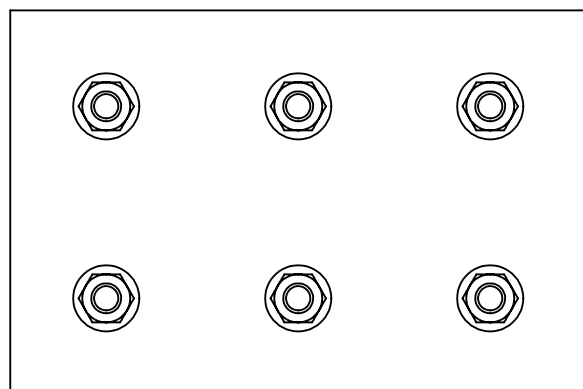
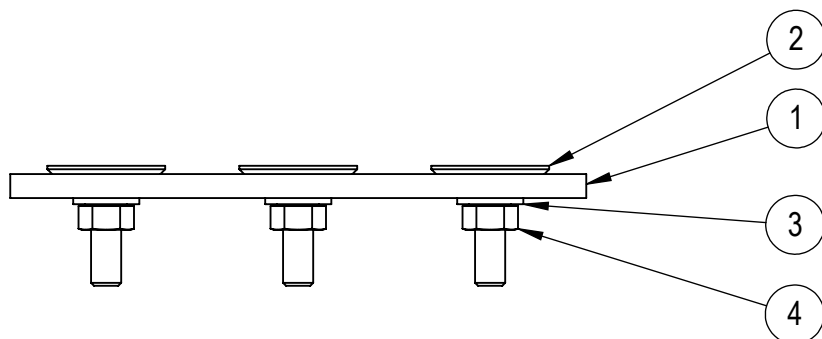

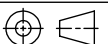


ITEM NO.	WEIGHT	QTY.	DESCRIPTION	Number	PartNo
1	0.21	1	ELEVATOR BELT SPLICE 6"	10-1004-A	M-1781
2	0.06	6	Elevator Bolt 5/16"-18NC x 1 1/4" Lg.	-	MH-1599
3	0.01	6	WASHER, FLAT, 5/16", TYPE A, STANDARD (SAE)	-	MH-1385
4	0.01	6	HEX NUT, 5/16"-18NC	-	MH-1028

NOTE:
ASSEMBLY DRAWING FOR REFERENCE,
VERIFY PART NUMBERS WITH FACTORY
PRIOR TO ORDERING



PROPRIETARY AND CONFIDENTIAL THE INFORMATION CONTAINED IN THIS DRAWING IS THE SOLE PROPERTY OF BCT. ANY REPRODUCTION IN PART OR AS A WHOLE WITHOUT THE WRITTEN PERMISSION OF BCT IS PROHIBITED.	UNLESS OTHERWISE NOTED				
	DIMENSIONS ARE IN INCHES TOLERANCES: ANGULAR: $\pm 1^\circ$ TWO PLACE DECIMAL ± 0.060 " THREE PLACE DECIMAL ± 0.030 "				
	FINISH: 500 $\sqrt{\quad}$ UNLESS OTHERWISE NOTED		DESCRIPTION		
	MODELED BY	DATE	ELEVATOR BELT SPLICE 6" ASSY		
	DRAWN BY Glenn	DATE 05/17/2011	SIZE A	DWG NO 10-1005-A	REV 0
 SIMILAR TO		DO NOT SCALE DRAWING			
SCALE: 1:2		EST WT: 0.7#		SHEET 1 OF 1	