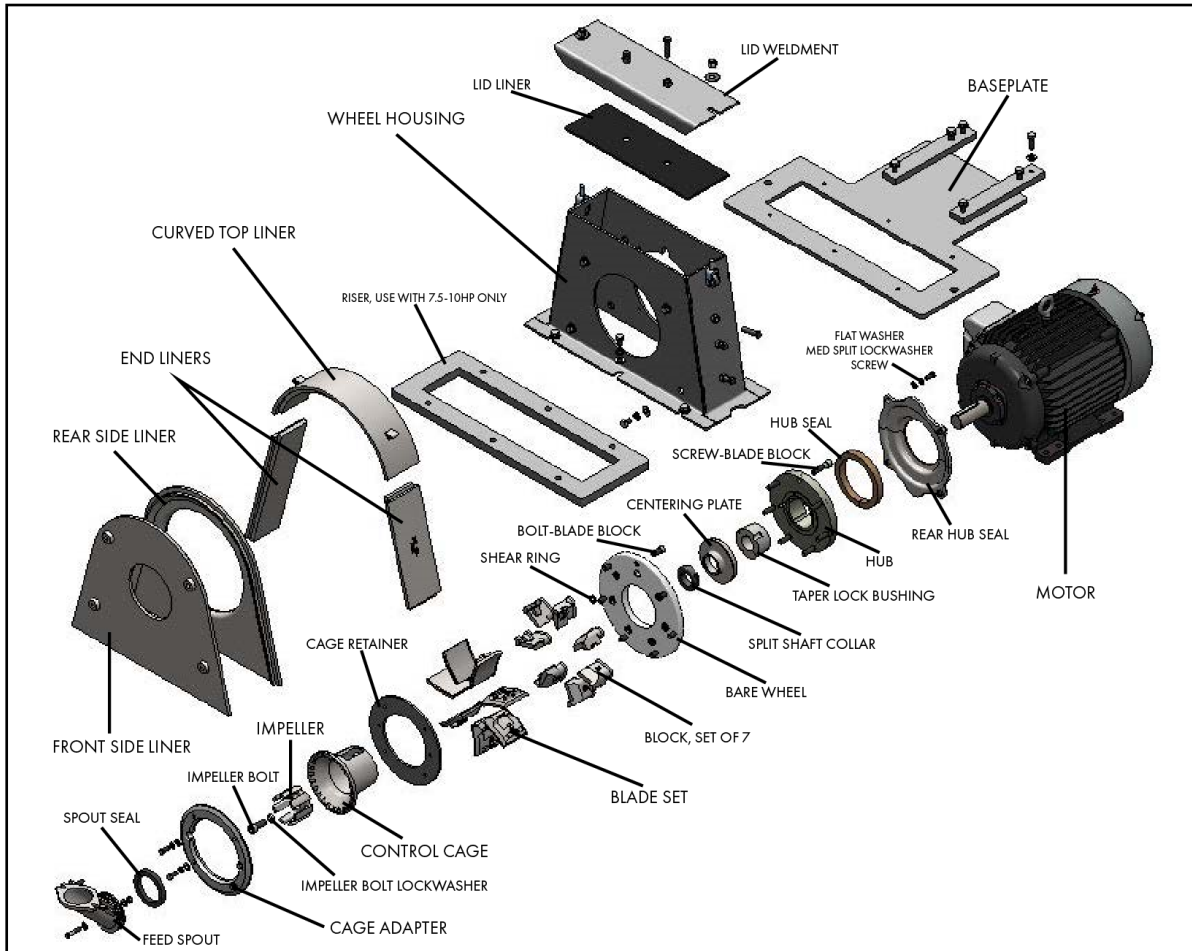


GIBSON® BLAST WHEEL REPLACEMENT PARTS

Replacement Components for Gibson® Blast Wheels



- 100% in-stock guarantee
- Same day shipment available
- Premium cast chrome alloy, heat treated components
- Multiple M-CAST upgrades available



BLAST CLEANING TECHNOLOGIES



GIBSON® BLAST WHEEL REPLACEMENT PARTS

Replacement Components for Gibson® Blast Wheels

TUNE UP KITS

Includes: Blade Set, Springs, Control Cage, Impeller, Spout Seal, Impeller Bolt and Lockwasher Combo Kit

KIT P/N	WHEEL TYPE	#OF BLADES & SPRINGS	BLADE SET	CAGE DEGREE	CONTROL CAGE	IMPELLER	IMPELLER BOLT	LOCKWASHER	SPOUT SEAL
M-C0144500	9-10"	4	M-C5100105	40DEG	M-C5000250	M-C5000158	M-C7003914	M-C6000962	M-C5000302
M-C0144502	12"	7	M-C5102064	40DEG	M-C5000138	M-C5000136	M-C7004114	M-C6000962	M-C5000302
M-C0144506	12"	8	M-C5101540	40DEG	M-C5000138	M-C5002103	M-C7004114	M-C6000962	M-C5000302
M-C0144503	13.5"	7	M-C5102063	40DEG	M-C5000138	M-C5000136	M-C7004114	M-C6000962	M-C5000302
M-C0144507	13.5"	8	M-C5101541	40DEG	M-C5000138	M-C5000103	M-C7004114	M-C6000962	M-C5000302
M-C0144504	15"	7	M-C5101366	40DEG	M-C5000138	M-C5000136	M-C7004114	M-C6000962	M-C5000302
M-C1044508	15"	8	M-C510142	40DEG	M-C5000138	M-C5000103	M-C7004114	M-C6000962	M-C5000302

BLADE BLOCKS

WHEEL SIZE	# OF BLOCKS IN SET	BLOCK SET	ROTATION	BLOCK SCREW, SHORT	BLOCK SCREW, LONG
9-10"	4	M-C5100104-4R	CW	M-C7003910	N/A
9-10"	4	M-C5101261-4L	CCW	M-C7003910	N/A
12-15"	7	M-C5100116-7R	CW	M-C7003910	M-C7003920
12-15"	7	M-C5100117-7L	CCW	M-C7003910	M-C7003920
12-15"	8	M-C5101543-8R	CW	M-C7003910	M-C7003920
12-15"	8	M-C5101544-8L	CCW	M-C7003910	M-C7003920

BARE WHEELS/HUBS

WHEEL SIZE	BARE WHEEL	HUB	# OF BLADES
9-10"	M-C0009383	N/A	4
12-15"	M-C0002428	M-C0000291-A	7
12-15"	M-C0044559	M-C0044560-A	8

SIDE LINERS

WHEEL SIZE	SIDE LINER 1	SIDE LINER 2
9-10"	M-C5000111	M-C5000111
12-15"	M-C5001938	M-C5001939

END LINERS

WHEEL	LENGTH	P/N
9-10"	11.00"	M-C5000110
9-10"	13.50"	M-C5000122
12-15"	6"	M-C5000129
12-15"	12.3"	M-C5001937
12-15"	15.3"	M-C5002308

TOP LINERS

WHEEL	P/N
9-10"	M-C5000109
12-15"	M-C5001936



Aftermarket Blast Parts

M-CAST™ is a trademark of Metcast Service Tech Resources Inc.
Gibson® is a registered trademark Gibson Equipment, LLC

TECHNOLOGY. SERVICE. SOLUTIONS.

Phone: 877.355.7577 • Fax: 262.785.1066 • 6682 W Greenfield Ave, Suite 103 • West Allis, WI 53214 • www.bct-us.com